



### X-Ray Dental Manikin

This X-ray dental manikin includes a special DENTOFORM® model with radio-opaque metal teeth, flexible finger for holding film, bite-opening instruments, and latex tongue. Includes chair mount. Sh. wt. 6 lbs. (2.72 kg).

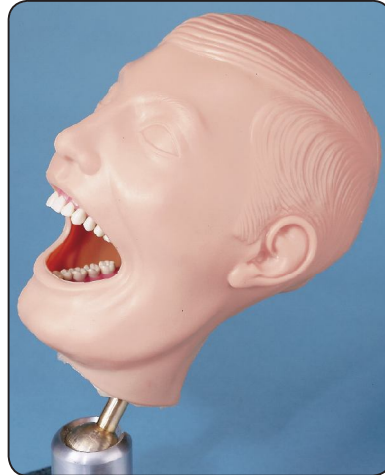
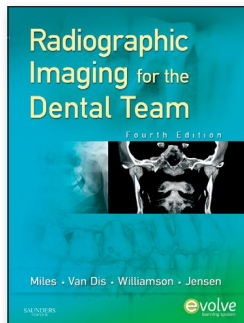
**SB23463U**

### Radiographic Imaging for the Dental Team

By Dale Miles, BA, DDS, MS, FRCD(C); Margot Van Dis, DDS, MS; Gail Williamson, RDH, MS; and Catherine Jensen, RDH, MHE. 352 pages. Fourth Edition. Softcover.

This all-in-one work-text helps you effectively acquire, process, and review dental radiographs and ensure successful patient outcomes. Learn and apply essential imaging techniques with the latest technology and most current practices in dental radiography. Concise, easy-to-read chapters detail the complete spectrum of radiographic imaging. ©2009. Sh. wt. 2 lbs. (0.91 kg).

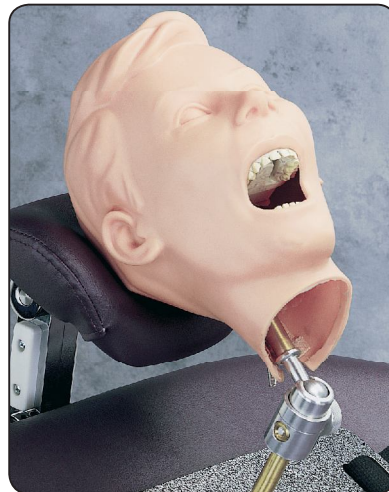
**SB47360U**



### Dental Manikin

A simple and economical chair manikin for auxiliary training of assistants and hygienists in the dental office. Unit includes DENTOFORM® model for technique training, Aluminal skull, and soft outer Plassein head. Universal ball-joint allows for rotation of head into a variety of positions. Gums are hard with fixed teeth. Teeth are not removeable. Includes chair mount. Sh. wt. 6.50 lbs. (2.95 kg).

**SB23464U**



### Pediatric X-Ray Dental Manikin

This manikin provides simulation of a deciduous dentition (mixed dentition) attached to a chair mounted simulator. The special model design and attachments permit students to learn proper pedodontic radiographic techniques. Sh. wt. 4.25 lbs. (1.93 kg).

**SB31044U**



### Dental Manikin Bench Mount

This small portable bench-clamp is popular with dental assistant and dental hygiene classes, as well as for dentistry students. It has a light-weight universal ball-joint for simulating neck movement. Use with Dental Manikin (SB23464U) listed left. Dimensions 1.91½" x 3" (49 x 7 cm). Sh. wt. 2.25 lbs. (1.02 kg).

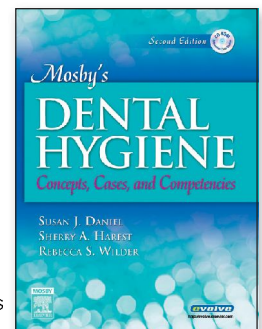
**SB23467U**



### Mosby's Dental Hygiene

By Susan Daniel, RDH, BS D.A.T.E., MS; Sherry Harfst, RDH, BSDH, MS; and Rebecca Wilder, RDH, BSDH, MS. 1040 pages. Second Edition. Hardcover. This full-color textbook/CD-ROM learning package makes it easy to master dental hygiene concepts. The text presents essential dental hygiene information in a logical sequence from setup to assessment to treatment. Includes how-to videos on procedures and techniques, along with many case studies and interactive exercises. ©2008. Sh. wt. 6.50 lbs. (2.95 kg).

**SB47361U** Book & CD-ROM

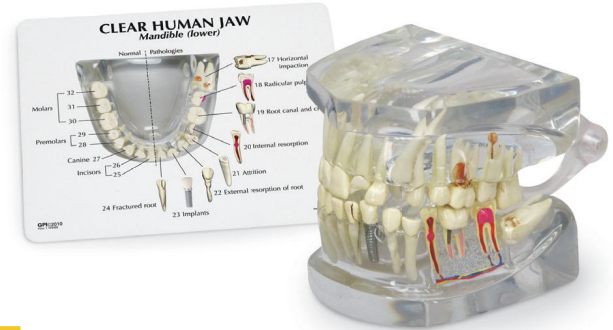




## Dental Disease Model

Based on an adult's lower jaw with soft gums and 16 removable teeth. One half of the model shows eight healthy teeth and healthy gums. The other shows the following dental diseases: plaque, calculus (tartar), periodontitis, inflammation of the root, and fissure, approximal and smooth surface caries. One part of the front bone section can be removed to view the roots, vessels, and nerves. Two molars are sectioned along the length to show the inside of the tooth. 21 parts, mounted on base. 7" x 10 1/4" x 7 1/4" (17 x 26 x 18 cm). Three-year warranty. Sh. wt. 2.75 lbs. (1.25 kg).

**SB41498U**



## Clear Human Jaw with Teeth

Full-size hinged clear cast jaw allows viewing of roots. Healthy side shows normal dentition and occlusion. Affected side shows multiple pathologies, including super eruption, apical alveolar abscess with caries, periodontal disease, lateral abscess, abfraction, irregular root curvature, impacted canine, erosion, fractured tooth, horizontal impact, radicular pulpitis, root canal with crown, internal resorption, attrition, external resorption of root, implants, and fractured root. Model size: 3 1/2" x 2 3/4" x 2 1/2" (8 x 16 x 13 cm). Includes 6 1/2" x 5 1/4" (16 x 13 cm) education card. Sh. wt. 1.25 lbs. (0.57 kg).

**SB48717U**



## Mr. Clean Mouth™ Display

This model is three times life size and has normal anatomy. It's great for teaching proper brushing and flossing techniques. Comes with a giant toothbrush and carrying case. Sh. wt. 7.50 lbs. (3.40 kg).

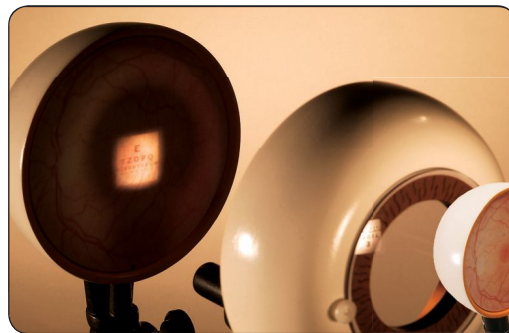
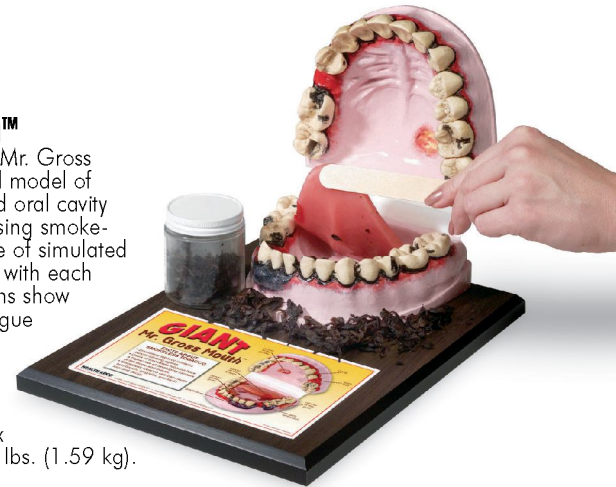
**SB29825U**

## Mr. Gross Mouth™

Gross them out with Mr. Gross Mouth™! This hinged model of the teeth, tongue, and oral cavity show the effects of using smokeless tobacco. A bottle of simulated tobacco juice comes with each model and instructions show how to make the tongue "spit." This model is three times normal size and is mounted on a wooden base.

6" x 4" x 8" (15 x 10 x 20 cm). Sh. wt. 3.50 lbs. (1.59 kg).

**SB22331U**



## Rubin's Eye and Vision Lab

Through a series of engaging hands-on, eyes-on experimental activities, your students will not only witness how the human visual organ functions, they will also recreate common visual disorders and discover how to correct them. Topics include emmetropia, accommodation, myopia, hyperopia, presbyopia, and astigmatism. For each disorder, your students will have to implement appropriate corrective steps — reinforcing the learning experience as they do so. Lab includes optical bench with track and indicator markings, object slide holder, anterior eye hemisphere, posterior eye hemisphere with retina, long-life halogen light source, four adjustable supports for positioning components on bench, set of five interchangeable color-coded corneal lenses made of impact-resistant optical plastic (plano lens, concave lens, convex lens, two astigmatic lenses), lens caddy, and step-by-step illustrated instructional guide to experiments. 18" L x 4 1/2" W x 8" H (45 x 11 x 20 cm). Sh. wt. 0.63 lbs. (0.29 kg).

**SB48053U**

