

Veinlite PEDI

For Children, Babies and Neonates

No More Guesswork - No More Probing



Proven Veinlite® Technology

Veinlite PEDI is our smallest and most compact version of the clinically proven and very successful Veinlite LED device which was reviewed as "an invaluable new addition to our kits." (Jeffery Lindsey - JEMS 2005)

Invaluable for Vein Access

Take the stress out of finding veins in your smallest patients ! The Veinlite PEDI is optimized to find veins using the traditional through-the-body transillumination technique and also by the patented* side-transillumination method which can be used anywhere on the body, even on the scalp. With the Veinlite PEDI, veins can be mapped to avoid valves or bifurcations and find the best place for safe access. The ingenious C-shaped design helps secure the vein, provides traction on the skin, facilitating easy needle insertion.

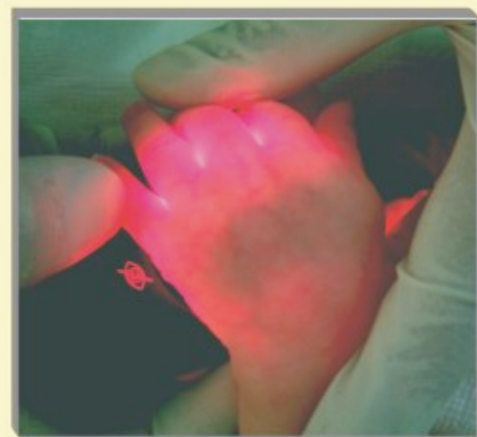
Snapshot

- * LED colors optimized for vein imaging
 - Orange LEDs (8) for superficial veins**
 - Red LEDs (4) for deep veins, dark skin
- * Disposable clear plastic cover
- * Small 3 volts Lithium Battery
- * Weight 40 gm (1.5 oz) with battery
- * Size 6.7 x 4.2 x 2.4 cm
- * One year warranty



Unique C-Shaped Design

With Veinlite PEDI's C-shaped design and 12 light emitting diodes (LEDs) in two colors, superficial veins can be seen and accessed anywhere on the body. No more guess work and no more probing.



Snap-on Neonate Adapter

An innovative adaptor** allows six LEDs to shine through a small opening for transillumination of limbs.

TransLite medical transillumination

8410 Hwy 90A, # 150, Sugar Land, TX 77478
www.veinlite.com info@veinlite.com
Tel. : 281 240 3111 Fax : 281 240 3122

Authorised Distributors :

JOLLY TECHNOCRATS

Complete Range of : OT Equipment, Skin, Surgery & Gynae Products

39, Surya Plaza, K-185/1 Sarai Jullena, Friends Colony Extension, New Delhi-110025
Ph. : 26922908, Telefax : 91-11-26833795, 26923104, e-mail : jollytec@del6.vsnl.net.in, jollytec@bol.net.in
website : www.jollytechnocrats.com (M) : (00) (91) 9810025581, (00) (91) 9810195581

Veinlite LED

From the Creators of Veinlite Comes the Latest Innovation in Vein Imaging and Access
Veinlite Led - The Best Pocket Vein Transilluminator

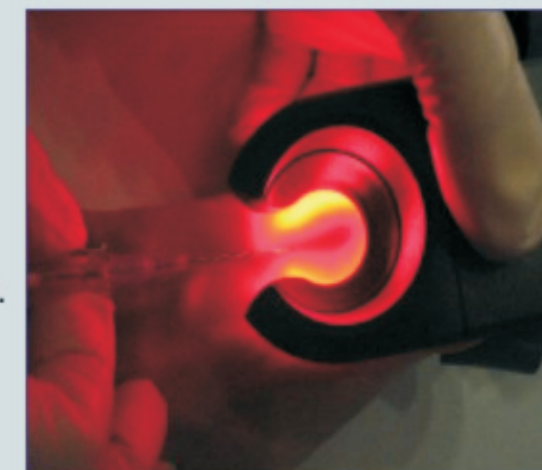
No More Guess Work

With Veinlite LED's unique C-shaped design and 24 light emitting diodes, superficial veins can be seen and accessed anywhere on the body. It secures the vein in place and stretches the skin for easy needle insertion without any guess work.



Applications

- ♦ Pediatric and adult vein access.
- ♦ Venous access in ER and oncology.
- ♦ Neonatal transillumination.
- ♦ Mapping varicose veins before phlebectomy.
- ♦ Accessing reticular veins for sclerotherapy.
- ♦ Phlebotomy Training.



Veinlite EMS

No More Guesswork - No More Probing

Invaluable for Vein Access

With Veinlite EMS's C-shaped design and 16 light emitting diodes (LEDs), superficial veins can be seen and accessed anywhere on the body. It secures the vein in place and stretches the skin for easy needle insertion.

Snapshot

- * LED colors optimized for vein imaging
 - Orange LEDs (8) for superficial veins**
 - Red LEDs (8) for deep veins, dark skin
- * Disposable clear plastic cover
- * Snap-on light shield and pedi adapter**
- * Two AA Batteries (Not included)
- * Weight 35 gm (1.5 oz) without batteries
- * Size 11.5 x 5.5 x 2.4 cm
- * One year warranty

