



HEARTON AED

Automated External Defibrillator

A15

"ANYONE, ANYWHERE, ANYTIME"

Mediana's **Heart On AED** helps to save people's lives in case of emergency.



1. Cover

Protected Icon Sheet, Shock Button, Adult/Pediatric Mode Switch

2. Status Indicator

Unit status, battery level status and temperature range status

3. Connecting Socket

Defibrillator pads connector socket. The pads are always ready for use.

4. Visual Icons

Indicator LED lights flash with the corresponding voice prompts. Visual Icons clarify the necessary actions.

5. Shock Button

Flashing button indicates "Ready for shock delivery" Push the button to deliver shock.

6. Adult//Pediatric Mode Switch

Easily switch from adult to pediatric mode without changing pads.

7. Open Switch

Slide the switch to the right to open up the cover. Unit automatically turns on.

8. Speaker

Acoustic indicator for real time guidance.



9. IR Port

IR communication Port between PC & AED

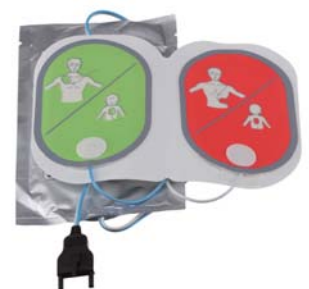
10. SD Card Port

Review stored data & software upgrade



11. Battery

Disposable LiMnO2 Non-Rechargeable



12. Pads

Two-In-One Electrode (Adult / Pediatric)

A15 Features

- Semi-automatic operation (Adult/Pediatric)
- Adult/Pediatric Mode Switch
- Quick Start Power the A15 by using the Open Lid Switch
- 2010 AHA guidelines
- Battery Capacity 4.2Ah/15V(200shocks or 10hr monitoring)
- Voice prompt, Action Icon(LED) Indicator, Status LCD
- Status indicator : self test (fail/pass), battery level, Temp, condition
- Self-test : POST(Power On Self Test), Periodic test(daily, weekly, monthly), BIST(Battery Insertion Self Test)
- SD card, IR communication support
- Event review PC software (Option)

Fast & Easy Operation



1. Open the Cover

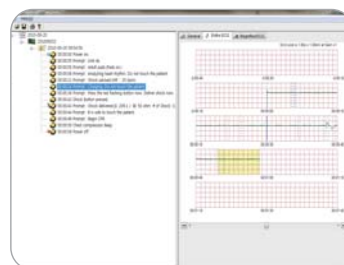
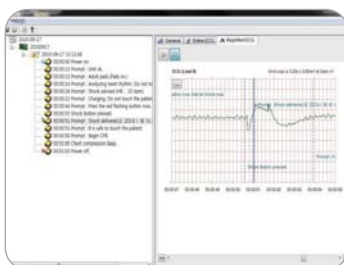


2. Attach the Pads



3. Push the Shock Button

AED Event Review Software



A15 Specification

Defibrillation Electric Shock

Waveform	Biphasic Truncated Exponential (BTE) waveform (Impedance compensation)
Energy	Adult: 185 to 200J (±5%) Pediatric: 45 to 50J (±5%)
Operating mode	Semi-Auto

ECG

Lead	II (RA, LL)
Patient impedance	25 to 175 ohm
Detection	V/F more than 200 μ V V/T more than 160 per min

Indication

Controls	
Standard	Open(Power) switch, Shock button, Adult/Pediatric mode switch
Indicators	
Visible	ICON Indicator, Status LCD(Unit status, Battery status, Temperature status), LED (Adult/Pediatric mode switch LED)
Audible	Speaker (Voice prompt), Beep (CPR indication)

Physical

Dimensions	240 × 294 × 95 (mm) (W×H×D)
Weight	Approx. 2.65 kg including the battery excluding pads

Self Test

Cycle	Every 24 hours, 1 week, 1 month Power on self test, Battery insertion self test
Test result	Status LCD displays "O"/"X".

Data Backup and Communication

Standard SD card, IR communication port

Accessories Specifications

Pads

Adult / Pediatric Pads

Standby life	2 years from manufacture date
Electrodes	Disposable pads
Placement	Adult: Anterior-lateral Pediatric: Anterior-posterior
Minimum active gel area	80 cm ² +/- 5%
Cable length	About 1.8 m

Environmental Conditions

Temperature	Operation: 0 to 43°C (32 to 109.4°F) Storage: 0 to 43°C (32 to 109.4°F)
Relative Humidity	5 to 95% RH (Non-condensing)

Battery

Type	LiMnO ₂ , Disposable, Long-Life Primary Cell
Voltage/Capacity	15V, 4200 mAh
Shelf Life (in the original packaging)	2 years from manufacture date
Standby Life (inserted in the AED)	5 years from manufacture date
Discharge	A minimum of 200 shocks (except the CPR period between the defibrillation therapy) or 10 hours of operating time at 20°C

Environmental Conditions

Temperature	Operation: 0 to 43°C (32 to 109.4°F) Storage: 0 to 43°C (32 to 109.4°F)
Relative Humidity	5 to 95% RH (Non-condensing)



Mediana Seoul Office

53, Donggwang-ro, Seocho-gu,
Seoul, Korea (P.C: 137-830)
Tel : +82-2-542-3375 Fax : +82-2-542-7447

Mediana Head Office / Factory / R&D

132, Donghwagongdan-ro, Munmak-eup, Wonju-si,
Gangwon-do, Korea (P.C : 220-801)
Tel : +82-33-742-5400 Fax : +82-33-742-5418

www.mediana.co.kr

